



# MONTHLY MEMBERSHIP PROGRESS REPORT

District C 2

Results as of: 01/31/2019

GMT: GORDON ZIEGLER

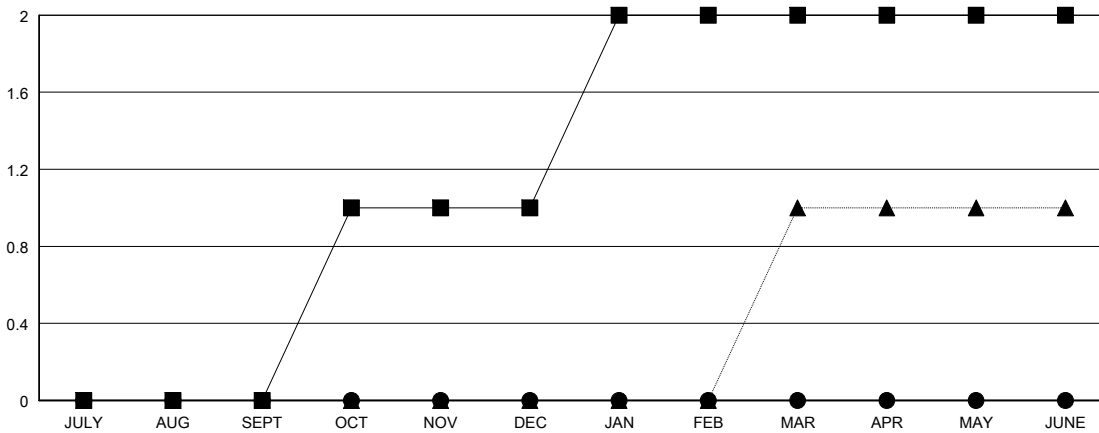
LOCATION ALBERTA

GMT CA

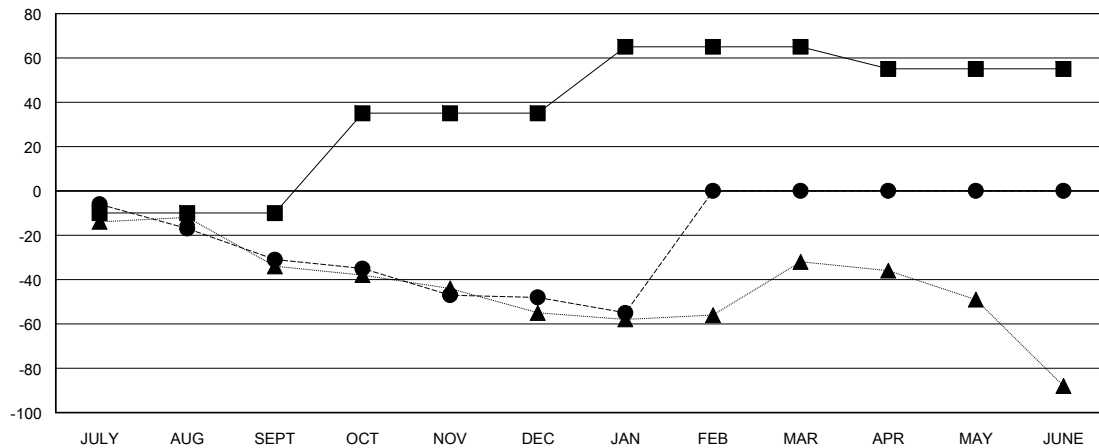
Clubs			
RESULTS FOR 2018-2019			
QUARTER	NEW CLUB GOAL	NEW CLUBS	DROPPED CLUBS
JULY/AUG/SEPT	0	0	0
OCT/NOV/DEC	1	0	0
JAN/FEB/MAR	1	0	0
APR/MAY/JUNE	0	0	0

Members			
RESULTS FOR 2018-2019			
QUARTER	MEMBER GROWTH NET GOAL	MEMBER GROWTH ACTUAL	DROPPED MEMBERS ACTUAL (including transfers)
JULY/AUG/SEPT	-10	26	54
OCT/NOV/DEC	45	45	56
JAN/FEB/MAR	30	26	27
APR/MAY/JUNE	-10	0	0

GOALS AND ACTUAL NEW CLUBS CUMULATIVE



GOALS AND ACTUAL MEMBERS CUMULATIVE



DROPPED CLUBS: 0	40 CLUBS OF 90 ADDED 1 OR MORE NEW MEMBERS	<u>GENDER DISTRIBUTION</u> MALE 1,556 (74.56%) FEMALE 531 (25.44%) Women Percentage Fiscal Year Goal: 30%
<u>DROPPED MEMBERS</u> DECEASED 18 CLUB CANCELLED 0 OTHER 119 TOTAL 137	<a href="#">CLICK HERE FOR CUMULATIVE MEMBERSHIP DATA</a>	TOTAL FAMILY UNIT MEMBERS 312 FAMILY MEMBERS PAYING HALF DUES 159